

SHARP

ATOMIC DIGITAL WALL CLOCK with WIRELESS WEATHER DISPLAY

Instruction manual



Thank you for your purchase. The utmost care has gone into the design and manufacture of your clock. Please read these instructions carefully and keep them for future reference.

This clock automatically synchronizes itself to the US Government's National Institute of Standards and Technology radio signal from Fort Collins, Colorado. The WWVB radio signal daily broadcast ensures that the atomic clock will always display the most accurate date and time. This clock never needs setting.

The weather station is equipped with many functions providing weather information to you. The receiver unit has a clear, easy-to-read display that shows the weather forecast, indoor temperature, time, month, date, as well as the outdoor temperature measured and transmitted from the outdoor sensor.

The 433 MHz technology means no wire installation is required and you can place the sensor anywhere you like within 100 feet.

1st

Quick Start Set Up: Outdoor Sensor

1. Pick a sheltered place out of direct rain, snow or sunlight
2. Insert 2 x AA batteries
3. Replace battery door

2nd

Quick Start Set Up: Weather Station

1. Insert 2 x AA batteries
2. Press re-set button on the back of the clock with a pin or paperclip to re-start the clock. The clock will synchronize with the transmitter set automatically.
3. The antenna "▼" flashes when the clock receives outdoor sensor signal.

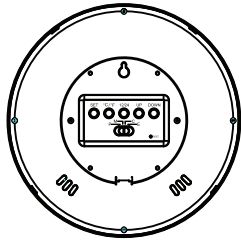
NOTE:

When the antenna is flashing, it is searching for the atomic signal. Please wait until the flashing stops before you try to setup the clock. The weather station is disabled while searching for the atomic or the outdoor signal.

PLEASE NOTE:

1. Start this clock at night and let the clock receive the signal automatically past midnight.
2. Always place the unit away from interfering sources such as TV set, computer, metal objects and electrical appliances.
3. Areas with access to windows is recommended for better reception.

MAIN FEATURES: WEATHER STATION



1. 12H/24H button
Press it to switch 12 hour / 24 hour.
Press and hold it for 2 second to enter the receiving temperature data from the transmitter.
2. °C/°F button
Press it to switch between Celsius and Fahrenheit.
Press and hold it for 2 second to receive the time signal manually.
3. SET button
Press and hold it for 2 seconds to enter the time setting mode.
Press it to switch between hour/minute/year/month/date/DST.
4. UP button
In setting mode, press it to increase the setting value.
5. DOWN button
In setting mode, press it to decrease the setting value.
6. TIME ZONE SWITCH
Slide the time zone switch to display the time in the desired time zone.
7. WALL-MOUNTING HOLDER
Use it to support the main unit on the wall.
8. RESET:
Press it to reset all values to default values.
In case of malfunction, the unit may be required to reset.
9. BATTERY COMPARTMENT
Accommodates 2 x AA size batteries (alkaline batteries recommended).
10. TODAY'S FORECAST window
Shows the weather forecast for coming 12 hours.
11. OUTDOOR temperature window
Shows current outdoor temperature.
12. INDOOR temperature window
Shows current indoor temperature.
13. CLOCK window
Displays clock time.
14. CALENDAR window
Displays calendar.

RECEPTION

This clock automatically synchronizes itself to the US Government's National Institute of Standards and Technology in Fort Collins, Colorado. The WWVB radio signal daily broadcast ensures that the atomic clock will always display the most accurate date and time.

In most areas, a signal can only be received at night. If your clock does not receive the WWVB signal immediately, just wait overnight and it will be set in the morning.

SETTING UP THE WEATHER STATION (AFTER SETTING UP OUTDOOR SENSOR)

1. Remove the battery door and insert 2 x AA size batteries into the battery compartment. Make sure you insert them the right way according to the polarity information (+/-) marked on the battery compartment.
2. Replace the battery door.
3. Press the "RESET" button on the back of the clock with a pin or paperclip to re-start the clock. The clock will synchronize with the transmitter set automatically.
4. The antenna "▼" flashes when the clock receives outdoor sensor signal.

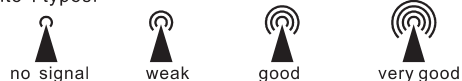
RECEPTION OF RADIO CONTROLLED TIME SIGNAL

The time and date are radio-controlled. The current time and date are automatically synchronized with the time signal transmitted from U. S. A (WWVB).

When used for the first time (after inserting the batteries or pressing the "RESET" key), the clock will start to receive the transmitter signal. It will start to receive RC signal 3 minutes after.

RC SIGNAL STRENGTH INDICATOR

The signal indicator displays signal strength in 4 levels. Wave segment flashing means time signals are being received. The signal quality could be classified into 4 types:



If the RC clock receives signal successfully, a sync-time symbol "▲" will appear on the LCD.

The unit has already synchronized with the time sign transmitter. Otherwise the segment will disappear from the LCD display.

TIME CALENDAR SETTING

If you are out of reach of the Radio Controlled transmitter or if the reception is poor, the time and calendar can be set manually. Once the signal of transmitter is received again, the clock will automatically synchronize with the exact time and calendar.

1. In normal time mode, press and hold the "SET" key for 2 seconds to enter the time setting mode.
2. Press the "UP" or "DOWN" key to change the value of the flashing Hour digit.
3. Repeat the above operations to set time and calendar in this order:
> Hour > Minute > Year > Month > Date > DST.
4. The time zone setting are represented by the below abbreviations:
P=Pacific M=Mountain C=Central E=Eastern
5. Press "SET" key to save and exit the setting mode. Or let it exit automatically 30 Seconds later without pressing any key.

DAYLIGHT SAVINGS TIME (DST)

The clock has been programmed to turn on DST as defaulted. Press UP/DOWN key to change to OFF mode during the time setting. The DST will show when the clock receives the RC signal during the summer.

FUTURE FORECAST

1. There are 6 weather icons to represent different weathers:



Sunny



Sunny Intervals



Cloudy



Rain



Rain + Thunder



Snow

NOTE:

1. The accuracy of a general pressure-based weather forecast is about 70% to 75%.
2. The weather forecast is meant for next 12 hours. It may not necessarily reflect the current situation.
3. The "Sunny" icon, when applied to nighttime, implies clear weather.

INDOOR AND OUTDOOR TEMPERATURE RECORDS

Change the temperature unit to °C for Celsius or °F for Fahrenheit by pressing the "°C/°F" key.

NOTE:

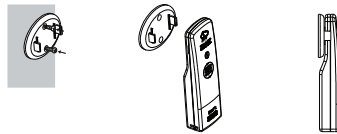
1. If no signal are received or the transmission is interfered, "-- --" will appear on the LCD.
2. Relocate the clock or transmitter in other positions and make sure the transmission is within the effective range of 100 feet approx.
3. After several trials in vain, please reset the clock. Reposition the weather station where the reception is the best.

NOTE:

Attention! Please dispose of used unit or batteries in an ecologically safe manner. ♻

USING THE TABLE STAND OR WALL-MOUNTING STAND

The receiver and transmitter have three mounting structures:



For the receiver, place the screw on the desired wall and hang the receiver by the recessed hole at the back of the clock or just simply place it on the desktop by the table stand.

For the transmitter, fix the separate wall-mounting stand outside in the area protected from direct rain by the screw. Once the stand is mounted, place the transmitter into the stand on the wall. You can place it on the desktop by its table stand.

SPECIFICATION

MAIN UNIT

Recommended operating range: 0°C to 45°C
32°F to 113°F
Resolution: 0.1°C/°F (above 0°C/32°F)
1°C/°F (below 0°C/32°F)

Calendar range: from year 2000 to 2099
Radio controlled signal: WWVB

REMOTE SENSOR

Recommended operating range: -50°C to 70°C
-122°F to 158°F
Resolution: 0.1°C/°F (above 0°C/32°F)
1°C/°F (below 0°C/32°F)

RF transmission frequency: 433MHz
Remote sensor: 1 unit
RF transmission range: maximum 30 meters
Temperature sensing cycle: around 30 seconds

POWER

Main unit: 3.0V, use 2 x AA 1.5V alkaline battery
Remote sensor: 3V, use 2 x AA 1.5V alkaline battery

DIMENSION

Main unit: 240 (W)X240 (H)X48 (D)mm
9.45 (W)X 9.45 (H)X 1.89 (D)inch

Remote sensor: 42 (W)X136 (H)X25 (D)mm
1.65 (W)X5.35 (H)X0.98 (D)inch

IMPORTANT NOTES

Avoid installing this unit in places exposed to direct sunlight or close to heat radiating appliances such as electric heaters, on top of other stereo equipment that radiates too much heat, places lacking ventilation or dusty areas, places subject to constant vibration and/or humid or moist areas. Operate controls and switches as described in the manual.

FCC INFORMATION

This equipment has been tested and found to comply with the limits for a Class B digital device, pursuant to Part 15 of the FCC Rules. These limits are designed to provide reasonable protection against harmful interference in a residential installation. This equipment generates, uses, and can radiate radio frequency energy and, if not installed and used in accordance with the instructions, may cause harmful interference to radio communications. However, there is no guarantee that interference will not occur in a particular installation. If this equipment does cause harmful interference to radio or television reception,

which can be determined by turning the equipment off and on, the user is encouraged to try to correct the interference by one or more of the following measures:

- Reorient or relocate the receiving antenna.
 - Increase the separation between the equipment and receiver.
 - Connect the equipment into an outlet on a circuit different from that to which the receiver is connected.
 - Consult the dealer or an experienced radio/TV technician for help.
- This device complies with Part 15 of the FCC Rules. Operation is subject to the following two conditions:
(1) This device may not cause harmful interference, and
(2) This device must accept any interference received, including interference that may cause undesired operation.

Warning: Changes or modifications to this unit not expressly approved by the party responsible for compliance could void the user's authority to operate the equipment.

IMPORTANT SAFETY INSTRUCTIONS

1. Read these instructions. Keep these instructions. Follow all instructions. Heed all warnings.
2. Do not use this apparatus near water.
3. Clean only with dry cloth.
4. Do not block any ventilation openings. Install in accordance with the manufacturer's instructions.
5. Do not install near any heat sources such as radiators, heat registers, stoves, or other apparatus (including amplifiers) that produce heat.
6. Do not defeat the safety purpose of the polarized or grounding-type plug. A polarized plug has two blades with one wider than the other. A grounding type plug has two blades and a third grounding prong. The wide blade or the third prong is provided for your safety. If the provided plug does not fit into your outlet, consult an electrician for replacement of the obsolete outlet.
7. Protect the power cord from being walked on or pinched particularly at plugs, convenience receptacles, and the point where they exit from the apparatus.
8. Only use attachments / accessories specified by the manufacturer.
9. Unplug this apparatus during lightning storms or when unused for long periods of time.
10. Refer all servicing to qualified service personnel. Servicing is required when the apparatus has been damaged in any way, such as power-supply cord or plug is damaged, liquid has been spilled or objects have fallen into the apparatus, the apparatus has been exposed to rain or moisture, does not operate normally, or has been dropped.
11. This appliance shall not be exposed to dripping or splashing water and no object filled with liquids such as vases shall be placed on the apparatus.
12. Use only with the cart, stand, tripod, bracket, or table specified by the manufacturer, or sold with the apparatus. When a cart is used, use caution when moving the cart/apparatus combination to avoid injury from tip-over.
13. Do not overload wall outlet. Use only power source as indicated.
14. Use replacement parts as specified by the manufacturer.
15. The product may be mounted to a wall only if recommended by the manufacturer.
16. Upon completion of any service or repairs to this product, ask the Service technician to perform safety checks.



**For Customer Service Please Call Toll Free at
1-(800)-221-0131 and ask for Customer Service.
Monday-Friday 9:00 AM - 4:00 PM EST**

Please call for assistance before returning the clock to the store.

One Year Limited Warranty

M.Z. Berger & Company warrants the original consumer purchaser of this product that it shall be free of defects in materials and workmanship for one year from the purchase date of this product. Defects caused by tampering, improper use, unauthorized modifications or repairs, immersion in water or abuse are not covered by this warranty. If a defect covered by this warranty occurs during the warranty period, wrap your clock carefully and send it to the following address:

MZ Berger Service Center
29-76 Northern Boulevard
Long Island City, NY 11101

You must include a Proof of Purchase, either the original receipt or a photocopy and a check or money order for USD \$6.00 to cover the cost of handling. Also include your return address inside the package. M.Z. Berger will repair or replace the clock and return it to you. M.Z. Berger will not be liable for any loss or damage, including incidental or consequential damages of any kind; from any breach of warranty either expressed or implied relating to the product. Since some states do not allow the exclusion or limitation of incidental or consequential damages, this limitation may not apply to you.

Printed in China

Model SPC906/SPC908

SHARR registered in the U.S. Patent and Trademark Office.