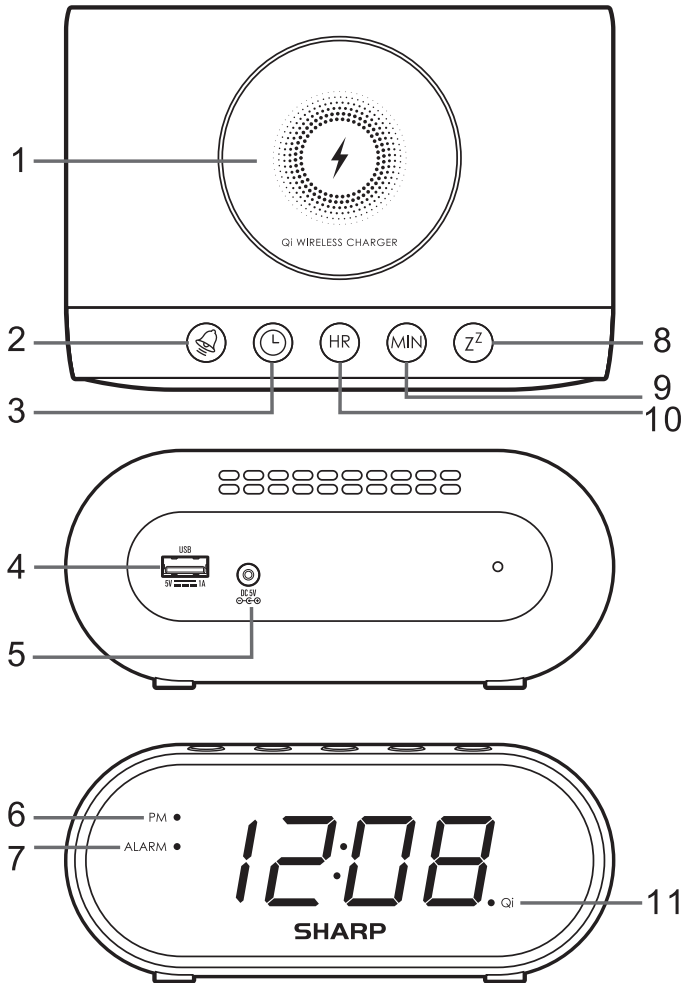


SPC679 Qi Wireless Digital Alarm Clock

Thank you for your purchase of this quality clock. The utmost care has gone into the design and manufacture of your clock. Please read these instructions and store them in a safe place for future reference.

Controls



1. Qi WIRELESS CHARGING PAD
2. ALARM BUTTON
3. TIME BUTTON
4. USB CHARGING PORT
5. DC 5V JACK
6. PM INDICATOR
7. ALARM INDICATOR
8. HOUR BUTTON
9. MINUTE BUTTON
10. SNOOZE "z" BUTTON
11. Qi INDICATOR LIGHT

Connecting To The Power Supply

Insert the AC adaptor into a 120V AC ~ 60Hz mains outlet.

Battery Backup

The clock time and alarm (if set) can be maintained during a power failure by 2 x AAA battery (not supplied). Once the power is restored, check the time to make sure it is accurate and re-set if necessary.

NOTE: The display will not be lit while the clock is operating under battery use; time will display once the power is restored.

Inserting The Battery Backup

- Open the battery compartment at the back of the unit by pressing on the catch and removing the cover.
- Insert 2 x AAA battery (preferably alkaline batteries) into the battery compartment, following the polarity as shown on the diagram inside the compartment.
- Replace the battery compartment cover.

Qi Wireless Charging

- Place your wireless device on top of the clock, charging will begin on contact.
 - When wireless charging, the Qi indicator is continuously solid.
- NOTE:**
- When the phone is being charged your phone charging indicator will show as normal.
 - For maximum charging efficiency, the phone must be aligned with the center of the charging pad.

USB Charging

- To charge, connect your USB device to the USB port of this clock.
- NOTE:**
- Use only with devices that require 5V USB power.
 - Each USB port provides 1,000mA recharging current. Devices requiring more than 1,000mA should not be used.
 - Charging time may vary for different devices.
 - This device is to be used **ONLY** for **SMARTPHONES**. Charging **TABLETS & LAPTOP** will void the warranty.

Setting The Clock

- Press and hold the **TIME** button down to activate time setting.
- While holding down the **TIME** button, press the **HOUR** button to advance to the correct hour. The PM indicator will light when the hour is advanced into the PM time.
- While holding down the **TIME** button, press the **MIN** button to advance to the correct minute.
- Release the **TIME** button when the correct time is shown on the display.

Setting The Alarm

- Press and hold the **ALARM** button down to activate alarm setting.
- While holding down the **ALARM** button, press the **HOUR** button to advance to the correct hour. The PM indicator will light when the hour is advanced into the PM time.
- While holding down the **ALARM** button, press the **MIN** button to advance to the correct minute.
- Release the **ALARM** button when the correct alarm time is shown on the display.

Using The Alarm Function

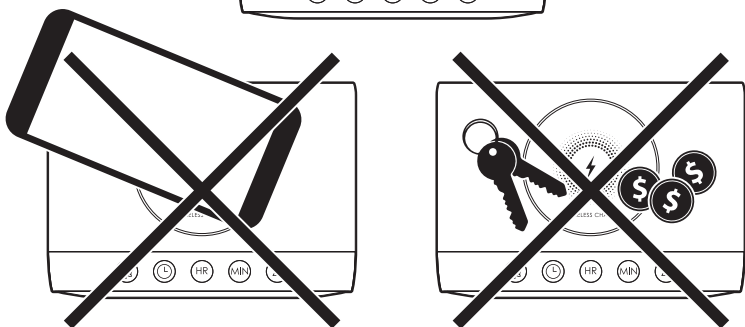
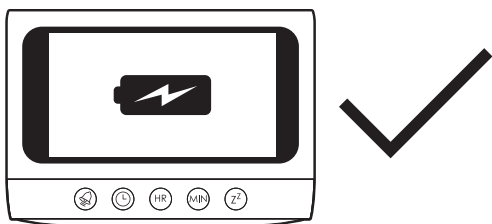
- Press the **ALARM** button to activate the alarm and the alarm indicator will light up the display.
- Press the **ALARM** button again to deactivate the alarm and the alarm indicator will no longer be visible.

Snooze Function

- Press the **SNOOZE** "zZ" button after the alarm sounds will cause the alarm to pause and the alarm will sound again in 9 minutes. This will happen each time the **SNOOZE** "zZ" button is pressed.

Qi Compatible With:

- Samsung Galaxy: S20 Ultra, S20 Plus, S20, Note 10 Plus 5G, Note 10 Plus, Note 10, S10 5G, S10 Plus, S10, S10e, Note 9, S9, S9+, Note 8, S8, S8+, S7, S7 Edge
- Apple iPhone: SE 2020, 11 Pro Max, 11 Pro, 11, XS Max XS, XR, 8, 8 Plus and all Qi-enabled smartphones!



SAFETY WARNING

Only place Qi approved charging devices onto the charging pad. Please do not place keys, coins or other metal objects onto the charging pad.

The "Qi" symbol is a trademark of the Wireless Power Consortium.
The product is designed for Qi Certificate.

Battery Precautions

- Only batteries of the same or equivalent type are to be used.
- Batteries are to be inserted with the correct polarity.
- The supply terminals are not to be short-circuited.
- Exhausted batteries are to be removed from the product.
- Do not dispose of batteries in fire; batteries may explode or leak.
- Adult assembly required to replace and remove battery.

Care For Your Clock

- The batteries should be replaced if the display or alarm becomes weak or dysfunctional. Store the clock without batteries when not in use. A soft cloth or a paper towel may be used to clean your clock. Do not use any corrosive cleaner or chemical solution on the clock. Keep the clock clean and dry to avoid problems.

FCC Information

This equipment has been tested and found to comply with the limits for a Class B digital device, pursuant to Part 15 of the FCC Rules. These limits are designed to provide reasonable protection against harmful interference in a residential installation. This equipment generates, uses, and can radiate radio frequency energy and, if not installed and used in accordance with the instructions, may cause harmful interference to radio communications. However, there is no guarantee that interference will not occur in a particular installation. If this equipment does cause harmful interference to radio or television reception, which can be determined by turning the equipment off and on, the user is encouraged to try to correct the interference by one or more of the following measures:

- Reorient or relocate the receiving antenna.
- Increase the separation between the equipment and receiver.
- Connect the equipment into an outlet on a circuit different from that to which the receiver is connected.
- Consult the dealer or an experienced radio/TV technician for help.

This device complies with Part 15 of the FCC Rules. Operation is subject to the following two conditions:

- (1) This device may not cause harmful interference, and
- (2) This device must accept any interference received, including interference that may cause undesired operation.

Caution: Any changes or modifications not expressly approved by the party responsible for compliance could void the user's authority to operate the equipment.

Digital Alarm Clock



This lightning flash and arrowhead within the triangle is a warning sign alerting you of "dangerous voltage" inside the product.

CAUTION

**RISK OF ELECTRIC SHOCK
DO NOT OPEN**

CAUTION: TO REDUCE THE RISK OF ELECTRIC SHOCK, DO NOT REMOVE COVER (ON BACK). NO USER SERVICEABLE PARTS INSIDE. REFER SERVICING TO QUALIFIED SERVICE PERSONNEL.



The exclamation point within the triangle is a warning sign alerting you of important instructions accompanying the product.

WARNING: TO REDUCE THE RISK OF FIRE OR ELECTRIC SHOCK, DO NOT EXPOSE THIS APPLIANCE TO RAIN OR MOISTURE.

CAUTION: TO PREVENT ELECTRIC SHOCK DO NOT USE THIS (POLARIZED) PLUG WITH AN EXTENSION CORD, RECEPTACLE, OR OTHER OUTLET UNLESS THE BLADES CAN BE FULLY INSERTED TO PREVENT BLADE EXPOSURE.

Please read this before operating your unit.

Safety Instructions

1. Read these instructions - All the safety and operating instructions should be read before this product is operated.
2. Keep these instructions - The safety and operating instructions should be retained for future reference.
3. Heed all warnings - All warnings on the appliance and in the operating instructions should be adhered to.
4. Follow all instructions - All operating and use instructions should be followed.
5. Do not use this apparatus near water - The appliance should not be used near water or moisture - for example, in a wet basement or near a swimming pool, and the like.
6. Clean only with dry cloth.
7. Do not block any ventilation openings, Install in accordance with the manufacture's instructions.
8. Do not install near any heat sources such as radiators, heat registers, stoves, or other apparatus (including amplifiers) that produce heat.
9. Do not defeat the safety purpose of the polarized or grounding - type plug. A polarized plug has two blades with one wider than the other. A grounding type plug has two blades and a third grounding prong. The wide blade or the third prong are provided for your safety. If the provided plug does not fit into your outlet, consult an electrician for replacement of the obsolete outlet.
10. Protect the power cord from being walked on or pinched particularly at the plugs, convenience receptacles, and at the point where they exit from the apparatus.
11. Only use attachments/accessories specified by the manufacturer.
12. Use only with the cart, stand, tripod, bracket, or table specified by the manufacturer, or sold with the apparatus. When a cart or rack is used, use caution when moving the cart/apparatus combination to avoid injury from tip - over.



13. Unplug the apparatus during lightning storms or when unused for long periods of time.
14. Refer all servicing to qualified personnel. Servicing is required when the apparatus has been damaged in any way, such as power supply cord or plug is damaged, liquid has been spilled or objects have fallen into the apparatus has been exposed to rain or moisture, does not operate normally, or has been dropped.
15. Please keep the unit in a good ventilation environment.
16. CAUTION: These servicing instructions are for use by qualified service personnel only. To reduce the risk of electric shock, do not perform any servicing other than that contained in the operating instructions unless you are qualified to do so.

WARNING: The mains plug is used as disconnect device, the disconnect device shall remain readily operable. This equipment is a Class II or double insulated electrical appliance. It has been designed in such a way that it does not require a safety connection to electrical earth. Do not install this equipment in a confined or building-in space such as a book case or similar unit, and remain a well ventilation conditions. The ventilation should not be impeded by covering the ventilation openings with items such as newspaper, table-cloths, curtains etc.

WARNING: All above markings were located on the external enclosure of the apparatus, except for label of Date Code was pasted inside the battery compartment. The apparatus shall not be exposed to dripping or splashing and that objects filled with liquids, such as vases, shall not be placed on apparatus.

Caution: Changes or modifications not expressly approved by the party responsible for compliance could void the user's authority to operate the equipment.

WARNING: The battery shall not be exposed to excessive heat such as sunshine, fire or the like.